



November 30, 2020

Personal Protective Equipment and Critical Supplies - Bulletin #5

Ontario Health (Central) Health System Partners,

The Ontario Health Central PPE and Critical Supplies Table is committed to gather, manage and equitably distribute **personal protective equipment (PPE)** and critical supplies to in-scope sectors within the region. Please find below the most up-to-date information on PPE use and conservation.

KEY UPDATES

- **Join Us! First Province-Wide PPE Knowledge Exchange**
- **New! Request Emergency PPE Sooner**
- **Proactive Allocations and CSE Reporting**
- **Swab Request Process Update**
- **Navigating N95s**
- **Reminder: LTC Stabilization Program Continues**
- **Fall Preparedness in LTC, RH and Congregate Settings – Recap of our first targeted Knowledge Exchange**
- **Central Region Supply Team Welcomes Three New Team Members**

JOIN US! FIRST PROVINCE-WIDE PPE KNOWLEDGE EXCHANGE *Partnering for PPE*

You are invited to join the five Ontario Health Regions on **December 7 from 1:00-2:30 p.m.** for a province-wide [PPE Knowledge Exchange](#). For more information and to register, [click here](#).



NEW! REQUEST EMERGENCY PPE SOONER

The threshold to submit critical requests for PPE has been **increased across the province, from seven days of supply remaining to 14 days of supply remaining**. Organizations will still receive up to 28 days of product, based on burn rates.

This increased request window will allow organizations to plan for the holiday season. All requests are still submitted through our [PPE and Swab Intake Form](#).

PROACTIVE ALLOCATIONS AND CSE REPORTING

On December 1, as per the Minister's Order, inventory submissions into the Ontario [Critical Supplies & Equipment \(CSE\)](#) portal will be **reduced from twice per week to once per week**. The updated link as of October 20, 2020 is: ontario-ppecse-survey.mgcs.gov.on.ca/Login.

We will continue to proactively allocate PPE to hospitals, long-term care and retirement homes who consistently report their inventory.

SWAB REQUEST PROCESS UPDATE

During the winter months, entities requesting **swabs** will need to **submit requests between Monday and Wednesday in order to receive in the same week**. Emergency escalations will still be addressed.

NAVIGATING N95S

N95 respirators continue to be constrained and are only allocated by the Ministry's Emergency Operations Center (MEOC) and are reserved for organizations with staff conducting eligible [Aerosol Generating Medical Procedures \(AGMPs\)](#), as well as those impacted by [Directive 5](#).

Ontario Health has developed an [N95 Reference Guide](#), which includes a list of fit testing supports to help eligible organizations navigate fit testing and access to NIOSH approved respirators.

REMINDER: LTC STABILIZATION PROGRAM CONTINUES

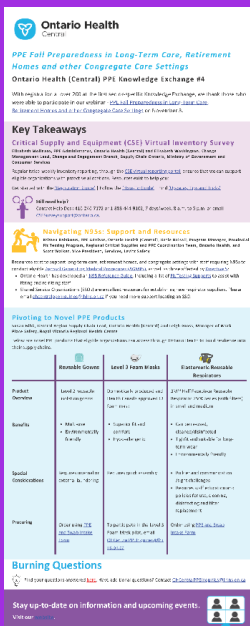
Currently, eighty per cent of long-term care homes have requested and received their **one-time stabilization allocation** of PPE. Homes can still request this one-time allocation through the [PPE and Swab Intake Form](#).

Please include 'LTC Stabilization Program' in the special instructions on the form. Product volumes provided are determined using an allocation framework developed by the Ministry of Health, based on the number of beds and number of staff within your organization.

PPE Fall Preparedness in Long-Term Care, Retirement Homes and other Congregate Care Settings Knowledge Exchange #4

On Tuesday, November 3, we hosted our first targeted Knowledge Exchange event. This event reviewed recent changes in PPE practices specific to Long-Term Care, Retirement Homes and Congregate Care Settings. Thank you to everyone who was able to participate.

A summary of all resources and information discussed, a recording of the webinar and full transcript of the Q&A from this and previous sessions can be found on our [Knowledge Exchange Events webpage](#).



CENTRAL REGION PPE SUPPLY TEAM WELCOMES THREE NEW MEMBERS

Our PPE Supply Chain Team welcomes three new members to the role of PPE Administrator. These individuals come from diverse backgrounds and each bring a unique skillset to the team. They are already adding valuable contributions to our region's PPE supply chain management. Please join us in welcoming them!



Alicia Kirk
Human Resource Coordinator
North Simcoe Muskoka LHIN



Elizabeth Molinaro
Lead, French Language Services and Indigenous Engagement
Patient Partnering, Community Engagement and Health Equity
Mississauga Halton LHIN



Estelle Mounsey
Team Assistant
North Simcoe Muskoka LHIN

Find up-to-date information on processes, guidance documents and events related to PPE, on your local PPE webpage: [Central LHIN](#) | [Central West LHIN](#) | [Mississauga Halton LHIN](#) | [North Simcoe Muskoka LHIN](#)